

# GRAPEVINE

## **FALL OFFICE HOURS:**

M, W & TH 8:30am - 12:30pm

### **Parish Administrator**

Janet McDonald

*Office Phone and Fax:*

978-689-0463

*E-mail:* admin@standrewsmethuen.org

### **Reverend Joseph Wilkes**

617-957-2960

### **Senior Warden**

Janet Ratcliffe

978-682-5606

*E-mail:* janetratcliffe@comcast.net

### **Clerk of the Vestry**

Molly Ratcliffe

### **Vestry Members**

Charlie Currie, James Beagan, Lisa Storey, Val Carey, Patti Eldred, Beth Regan, Huib Walta, Paula Campbell

### **Religious Education**

Mary-Ellen Briggs

978-208-8809

### **Pledge Clerk**

Elaine Morissette

978-683-8841

*E-mail:* remor20@aol.com

### **Computer/Web**

Huib Walta

webmaster@standrewsmethuen.org

*Please do not hesitate to call Rev. Joe or Janet at any time at the above numbers with pastoral emergencies. Be sure to inform them if you or anyone you know in the parish is ill and/or in the hospital.*

## GREETINGS FROM REV. JOE

Dear Sisters and Brothers in Christ,

Snow! As I write this on the last Sunday of October, the 20<sup>th</sup> Sunday after Pentecost, we're coping with the aftermath of an historic fall snow storm. It reminds me how fast the winter season is approaching. I'm trying to focus on anticipating the renewal of Advent, and the joys of Christmas and Epiphany, and not get anxious about the other things winter will bring us that are less edifying.

We have a lot of great plans for Advent and the Christmas season. Most are listed elsewhere in this issue of the Grapevine. Mark your calendars. It's one way to participate as fully as you can in the life of your parish! I have been writing and speaking about participation a lot this fall. Janet Ratcliffe and Jim Beagan, as well as other lay leaders, have also taken up this conversation around the parish. Stepping up our participation by examining the priorities in our lives, and making time to be present with each other in our parish, is crucial to the quality of the experience we create for each other at St. Andrew's. It is also crucial to feeling more cen-

tered in lives turned toward God in faith.

Participation takes many forms of course. It's primarily the gifts of time and talent for the spiritual well-being we can bring each other. It's also financial. That's the hardest part for me to talk about. Maybe it is for you, too. I didn't become a priest to talk about money. And I'm sure you don't come to St. Andrew's to talk about money either. But we all know the hard truth. Our ministries through which we serve each other and our neighbors require resources that have to be paid for in the coin of the realm. A truth harder in tough times than in good times. But, we're blessed with much early success in a capital campaign whose quiet phase started earlier this fall to raise money for much-needed parish hall and organ repair. We'll be rolling this campaign out more broadly in the parish soon, possibly simultaneously with your reading this. It's a campaign in addition to our annual

stewardship pledge drive, which is itself vital to our daily ministries and operations. Taking on two campaigns, one for long term capital needs and one for stewardship, is a tall order. But the history of St. Andrew's is that tall orders are met prayerfully and responsibly. So I hold to joyful hope that even in difficult times we'll come through. God is surely with us, so whatever the numerical result, in the grander sense we will come through.

Let us keep each other in our prayers, and God bless us for a well-attended and fruitful season ahead.

God Bless you.

Faithfully,

Rev. Joe

## MESSAGE FROM YOUR SENIOR WARDEN

The long lazy days of summer have given way to the resumption of many activities here at St. Andrew's, including discussions of stewardship and our annual pledge drive. Jim Be-

gan kicked off our annual discussions several weeks ago with a sermon on the topic of our need for your commitment of time, talent and treasure. If you didn't hear Jim's sermon

or perhaps might like to refresh yourself on it, we're printing it elsewhere in this issue of the *Grapevine*. The pledge drive brochure is included in this issue of the

## SENIOR WARDEN MESSAGE (CONT.)

Grapevine.

As you know, our annual pledge drive supports our current operating needs. It blesses our congregation with the leadership of Rev. Joe, the helping hands of a part-time parish administrator and sexton, and allows us to keep the lights on and the church warm during the cold winter months. Your support is essential. This year, our annual pledge drive is being conducted concurrently with a campaign for

long-term capital needs and many of you will have the opportunity to discuss your financial commitment to both programs with a church representative. We welcome your questions and other input into this important process.

In order that we have adequate time to plan and budget for next year, we ask for the return of the pledge card contained on the end flap of the pledge drive brochure no later than **Sunday, November 13<sup>th</sup>**. You can mail

it to the church to the attention of the Pledge Recorder or drop it in offering plate on Sunday morning.

As always, we thank you for your consideration.

Peace,  
Janet

---

## TREASURER MESSAGE

As we head into the November, we usually have a comfortable margin built up in the budget to carry us through the early winter to the end of the year. So far, we have a favorable balance sheet to the tune of about \$4500. That is primarily due to the rentals. They are fully paid, and are only at 70% of their budgeted expenses. On the offering side, we are still holding at about \$90% of budget, but church expenses are all tracking close to 100% of budget. We are high this year on heat and plowing, and as stated before, we have already spent about 120% of the total budget for each. Maintenance this year is low on all properties, but that could change in a moment, as many people found out with the Halloween nor'easter. That storm also gave dire warnings about heating and plowing. Another storm last weekend was the near failure of our latest second-hand computer. We owe Huib a great deal of gratitude for resurrecting it, but we need to replace it with a new one.

We are trying to apply the findings of our energy audit, to improve our environmental stewardship

and our bottom line. We have recently removed the coke machine and the coke cooler that served as our refrigerator, two energy sinks that were replaced with an energy star refrigerator. We also purchased a small efficient quartz heater to warm the parlor without heating the whole gym. We will keep you posted on the savings from these purchases. We still can make many more improvements in energy conservation - come help out!

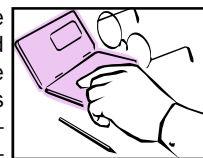
**Income: \$92,444**, including:

**Pledges: \$37,742.**

**Expenses: \$87,945**, (including accruals for purchases not yet billed)

**Net: \$4,500.**

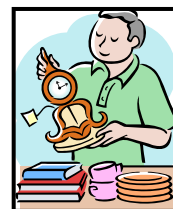
Gratefully Yours,  
James Beagan




---

## RUMMAGE SALE

St. Andrew's held another successful flea market this past September. As a result of everyone's efforts, a total of **\$1100.00** has been raised for our general budget. Thank you to everyone who participated and to Patti Eldred and Paula Campbell for organizing it. Well done!



## STEWARDSHIP CAMPAIGN

This is the stewardship sermon Jim Beagan gave on October 16, based on the readings of that date.

'Render unto Caesar the things that are Caesar's, and to God the things that are God's'

We're all familiar with the expression. The Gospel tells how it was Jesus' answer to Pharisees trying to trap him into saying something that would make the Romans arrest him. It was somewhat evasive, so what does it mean? Is it an either/or proposition? It's all Caesar's or God's? I suspect that now, just like back then, we like to think it's a little for Caesar, a little for God, and the rest for me.

Take Caesar's share. We see in the news, with all the fighting over taxes, how some people feel the government (Caesar) deserves not one cent more to do what it needs to do. Are they thinking of their future needs and those of future generations? Are we mostly selfishly thinking of what we want right now?

Do we feel the same way about God's share? What about God's share? The reading from Isaiah tells of the power of God. It uses heroic and symbolic language: leveling mountains, breaking bronze doors, creating light and darkness, prosperity and woe. In other words, He created everything, He gave us everything, and He can do all things. The psalm recognizes this with the refrain 'ascribe to the Lord the honor due his name, bring offerings and come into his courts'. So, maybe that either/or proposition is closer to the truth than we like to think. Maybe it is all God's, with a little bit for Caesar, where Caesar stands for all earthly concerns, including our own wants and needs.

And we're not just talking about possessions or money. In the second reading, Paul exhorts the Thessalonians to try hard in their 'work of faith and labor of love'; to use the example of serving God given to them, and to pay it forward by being an example to others. But to be an example, you have to first take care of business at home, to free you up to do what it takes to serve your ministry. That takes participation with all three of your gifts: time, talent and treasure. This church needs your help, your participation with all three.

Let's take a phrase from that reading, 'labor of love'. Is it a labor which you love to do, or labor for something, or someone, you love? Certainly,

a talent is about something you love to do. What talents, skills or strengths do you have to share? When we talk about labor for something we love, perhaps the best example is how we use our time, talent and treasure for our families. But isn't this church also your family? It should be a family that connects you, in spirit and action, to your bigger human family. The readings stress that God is Lord of all from east to west. We are all a part of his family, and should participate as such.

Looking at families, we are all aware of examples of how responsibilities and participation are often disproportionately spread out, and the results of that. Consider the family member, who always shows up for a holiday or family celebration without contributing his fair share. This creates a lot of resentment and dissension in the family. Often, one or two of siblings take on the care of an aged parent, or one spouse may rightly feel they do all the heavy lifting in a home. So what happens then? You get exhaustion or resentment, which can lead to burn-out and withdrawal, or even an illness or a death. That leaves the rest of the family scrambling on how to take care of a need or a responsibility which they took for granted. Does anyone see any parallels with our church life?

This is pledge season. We ask for your participation in stewardship: your time talents, and treasure. Please think about what you can offer.

First of all, there are your prayers, individually, but also here with your church family. Come to church and participate in our weekly service. Can you suggest anything that can bring us all into closer communion with God, and with each other? An example in recent memory might be the hymn sings. What about suggesting a prayer we can all say at service? Can you organize or participate in a book club? Organize or organizing a centering prayer group or an evening prayer service?

Offer your time and talents. Keep your eyes alert to where you can make a difference. Talk to the vestry, serve on the vestry, get others to help you accomplish something. Think of the individual or group efforts we've seen: the rummage sale, painting the hall, or cleaning up the memorial garden. Offer to help in those efforts. Don't wait to be asked. As the rummage sale showed, many hands help lighten the work. Energy use is a big problem for our budget; can you start a group to do some insulation work?

## STEWARDSHIP CAMPAIGN (CONT.)

Small things add up. We removed the coke machine and cooler, in part, because they cost more to operate than they generated in revenue. We bought a new refrigerator using, in part, the signup bonus for our new charge card. This shows that not (JANET PUT THIS IN ABOVE PARAGRAPH) Not all contributions to our bottom line are cash gifts. Another example is a fundraiser like the butter braids. Can you organize another one?

And when you are asked to participate, please do. Please don't make us beg for participation, like the annual embarrassment of trying to fill positions at the annual meeting, in the Sunday school, on an audit committee, or a choir; and then finally getting only the same people who are already heavily active in the life of the church.

Lastly there is money. Keeping the building open is taking up a larger and larger share of our budget. That leaves less for worship, education, activities and programs. You might have seen in the paper how oil costs are expected to top last year's, and due to last winter, we have already spent more than the entire year's fuel budget. So that trend is accelerating. Might there come a day when we have to do away with something that matters to you? The organ needs work. Maybe it will someday have to be

sacrificed and sold. The church hall, parlor and kitchen are energy pigs. Will we have to curtail their use? Will someone damage their car, or a leg, in a further deteriorated parking lot?

We ask you to consider what this worship space means to you, your personal family, and your bigger parish family. Please give prayerfully and generously when contacted in our annual stewardship campaign. Help keep lit, for next year, the light of God's love in our parish. Please also generously give in any upcoming capital campaign, to assure a strong future for our parish home.

This modification of a song substitutes 'stewardship' for 'peace'. The 'me' should apply to all of us.

**If not me, then who?**

**If not now, then when?**

**If not here, then where will stewardship begin?**

**I am where stewardship begins.**

**Oh, it's me, that's who**

**And it's now, that's when**

**And it's here, that's where stewardship begins**

**We are where stewardship begins.**

### ***Important Note***

*If you are scheduling an event in our parish hall, please let Janet M. know at the time you are entering the event on the calendar whether you will need tables and chairs and, if so, how many. Our sexton will then be able to plan his weekly schedule accordingly.*

## ENERGY AUDIT



Mass Interfaith Power and Light has recently done an energy audit of our property. The audit resulted in many recommendations for both small- and large-scale projects to improve our energy efficiency and reduce our carbon footprint. We'll begin implementing as many of those recommendations as we can and hope to schedule a work day in the near future. In the meantime, an electronic copy of the report is available to anyone who cares to read it. Please send an email to Janet R. ([janetratliffe@comcast.net](mailto:janetratliffe@comcast.net)) if you'd like to receive a copy.

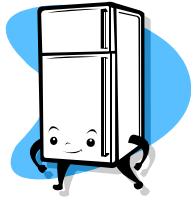
## COKE MACHINE UPDATE

Many of you have already noticed that we no longer have a soda machine at the downstairs parlor door entrance. Coca Cola recommended that the machine be pulled due to age and lack of use. In fact,

after a little investigation and some simple arithmetic, we discovered that instead of making money or even breaking even we were out of pocket to the tune of about \$68 annually to operate the machine.

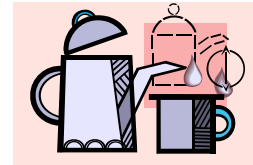
Our thanks to Dave Marsh who has stocked the soda machine, ordered product and counted coins for many years.

## NEW REFRIGERATOR



We've also said farewell to the sliding door cooler in our kitchen that was owned by Coca Cola. We've replaced it with a new energy star rated appliance. We are hopeful that the new refrigerator will

meet our needs while reducing both our carbon footprint and electric bills.



*Please consider helping out with the coffee hour ministry and take a turn providing cookies or pastries.*

*The sign up sheet is on the door connecting the downstairs parlor and kitchen.*

## PARISHIONER PICTURES



Have you been at church and known the face but can't put a name to the face? Are you new and need help learning all the names? We are going to set up a corner with pictures of people and families so that we will be able to learn who people are. In the upcoming weeks, you will see Patti Eldred and Beth Regan recruiting people for pictures. Please talk to them and get your picture taken. If you are heading to Florida for the winter, please see us before you go. If you already have a family picture that you like, we will also accept a hard copy or electronic version by email. Please be sure to label the back with everyone's name. It will be great to be able to put a name to that familiar face.

## HAPPY BIRTHDAY!



November 3 - James Sulesky

November 13 - Michael Wizboski

November 19 - Karl Wunderlich

November 24 - Chelsey Blanchette

November 25 - Matt McKeon

November 26 - Justice McGrail

December 8 - James Lee

December 11 - Dominic Drapeau

Dora Atkinson

December 12- Caela Miller

December 15 - Brooklynn McGrail

December 31 - Eric Dalrymple

Rev. Joe Wilkes

## LOOKING FOR ACOLYTES

Our acolytes are dwindling in number and we are looking for new recruits. Anybody aged 10 to adult can become an acolyte. The training is short and it is something

that you will pick up easily. Contact Beth Regan at 978-687-1340 or at church if you are interested. Thank you for considering this ministry.

# MEMORIALS

## Organ Memorial Fund

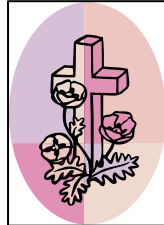
Lloyd R. Campbell

## Memorial Fund

Lloyd R. Campbell

## Building Preservation Memorial Fund

Lloyd R. Campbell  
Michele Smeester



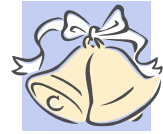
## Garden Memorial Fund

Arthur Wermers

*Donation received in honor of Gail & Dick Ratcliffe's 50th Wedding Anniversary*

## Music Memorial Fund

Lloyd Campbell



*Congratulations to Robin Lafreniere and Jeremy Robarge who were married at Saint Andrew's on September 17th.*

---

# BLESSING OF THE ANIMALS



*Our annual Blessing of the Animals was held on Sunday, October 2nd at St. Andrew's during our 9:30am service.*

---

# NEW EMAIL ADDRESS FOR TREASURER



We've set up a new email address to handle correspondence related to our finances. If you need to send an email to us regarding bill payments, expense reimbursements, payroll or other accounting/budget matters, please use [treasurer@standrewsmethuen.org](mailto:treasurer@standrewsmethuen.org). Those emails will find their way directly to our treasurer instead of going through our parish administrator.



## TEACHERS AND HELPERS NEEDED FOR SUNDAY SCHOOL

Have you ever wondered what it takes to be a Sunday School Teacher or helper? Most importantly, no previous teaching experience is required; just a love of children and a commitment to teach them the Word of our Lord Jesus Christ! Our curriculum provides you, on a CD, a weekly lesson plan with all the information you need to teach. The lesson plans include several ideas or options to use including the Bible story or passage, activity sheet, craft ideas, take home pages and more. Attendance sheets and a notebook will be provided for every class. Your involvement would be concentrated on planning (1-3

hours per week) and leading your class. There are scheduled teacher meetings to address special group lessons, activities, and teacher needs. Sunday school is held each Sunday from mid September through May, from 9:00 - 10:00am with the exception of a few holidays. Some of our teachers have been with us for many years (and we are grateful) and others are relatively new. Our goal is to have a team of two teachers for every class. Please speak to Mary Ellen Briggs or Valerie Carey for more information.



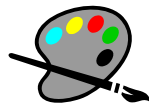
*Please welcome  
Mae Elisabeth  
Amaral and her  
family to Saint  
Andrew's.*

*Mae was baptized on  
September 25th.*

## SUNDAY SCHOOL WISH LIST

Below are a list of items that the Sunday School program would like to have that is not in our current budget:

- ▶ Adult scissors
- ▶ Thesaurus
- ▶ Low temp glue guns and glue sticks
- ▶ New acrylic paint (we have a limited supply)
- ▶ Quality paint brushes
- ▶ Religious puzzles



- ▶ Religious games for all ages
- ▶ Bible story toys for younger children
- ▶ Ceramic (religious) pieces to paint
- ▶ Plaster of paris
- ▶ Clay



*Thank You!*



## NURSERY CARE

We would like to be able to offer nursery care during our church service. Anyone who would like to help out in this area and anyone interested in using this service should speak to Valerie Carey, Mary Ellen Briggs or contact the office.

## PRAYER LIST REMINDER

Please remember that in an effort to keep the prayer list that is printed in the weekly bulletin as current as possible we clear all names on a quarterly basis. Names do not automatically roll over from one quarter to the next. That means that you need to contact the office at the beginning of January, April, July and October if there are names which you would like for us to retain



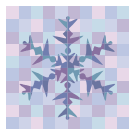
on the list. You are also welcome to add or delete names at any time during the quarter by calling or emailing the office. To help everyone remember, we'll continue to print notices in the bulletin as the time approaches for us to refresh the prayer list.

---

## CHRISTMAS PAGEANT

The Sunday School is looking for adults willing to help out with this year's Christmas Pageant. Anyone interested in helping with any part of the pageant should contact Valerie Carey or Mary Ellen Briggs. We will be looking for people to help in the following areas:

- Directing
- Set Design
- Music
- Costumes
- Planning



## DECEMBER CALENDAR

<b>December 4<sup>th</sup>:</b>	Second Sunday of Advent 9:30 am - 1789 Service
<b>December 11<sup>th</sup>:</b>	Third Sunday of Advent 9:30 am - Lessons and Carols
<b>December 18<sup>th</sup>:</b>	Fourth Sunday of Advent 9:30 am - Christmas Pageant
<b>December 24<sup>th</sup>:</b>	Christmas Eve Service (Saturday) Time - 4pm
<b>December 25<sup>th</sup>:</b>	Christmas (Sunday) 9:00 am - Quiet Service

*If you have an email address and are not currently on our email distribution list, please contact the office. Distributing the Grapevine via email is a tremendous cost savings for us.*

*Thank you!*